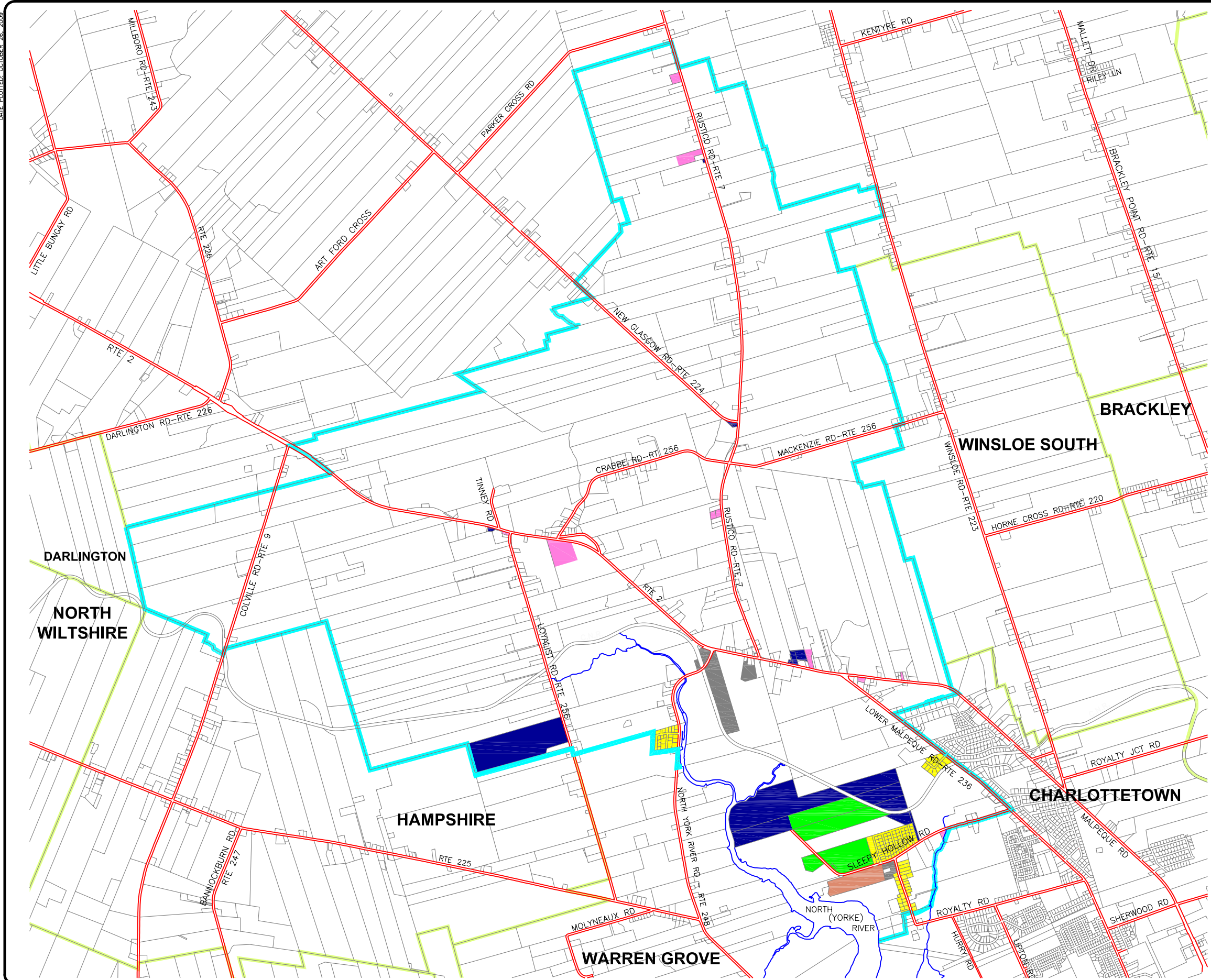


DATE PLOTTED: OCTOBER 26, 2009



LEGEND

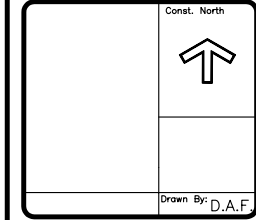
MILTONVALE PARK LIMITS	Cyan line
ADJOINING MUNICIPALITY LTS.	Light green line
PUBLIC SERVICE & INSTIT.	Blue fill
LIGHT INDUSTRIAL	Grey fill
RES. MOBILE HOME	Brown fill
RESIDENTIAL	Yellow fill
AGRICULTURAL	Green fill
RECREATIONAL & OPEN SP.	White fill
COMMERCIAL	Pink fill

NOTES

1. DIGITAL MAPPING INFORMATION SUPPLIED BY THE P.E.I. DEPARTMENT OF FINANCE, MAPPING SECTION AND THE P.E.I. DEPARTMENT OF ENVIRONMENT, ENERGY AND FORESTRY, RESOURCE INVENTORY AND MODELING SECTION, DECEMBER, 2007.

No.	Revision	Ckd.	Date

Subconsultant
P. Wood & Associates
 Consulting Planners
 Charlottetown, Prince Edward Island



ADI ADI Limited
 Charlottetown, PE, Canada
 Engineering, Consulting, Procurement
 and Project Management

Project Title
Miltonvale Park

Dwg. Title
LAND USE PLAN

Project No. (81) 4664-006.1
 Dwg. No. 4-3 Rev. No. 0

Scale
 HORIZ. 1:40,000
 This drawing is not to be scaled.

Offices located in:
 Charlottetown, Moncton, Saint John, Truro, Halifax, Sydney
 Port Hawkesbury, St. John's, Fredericton and Salem, NH